

# **DUKE DEMENTIA FAMILY SUPPORT PROGRAM**

## **Caregiver Connections**

**An Educational Webinar Series With The Experts**

**The presentation will begin shortly.  
Thank you for your patience!**

**[dukefamilysupport.org](http://dukefamilysupport.org)**

**919-660-7510**



# Home Safety & Dementia

Marie Dagger, MS, OTR/L  
Orange County Department on Aging

---

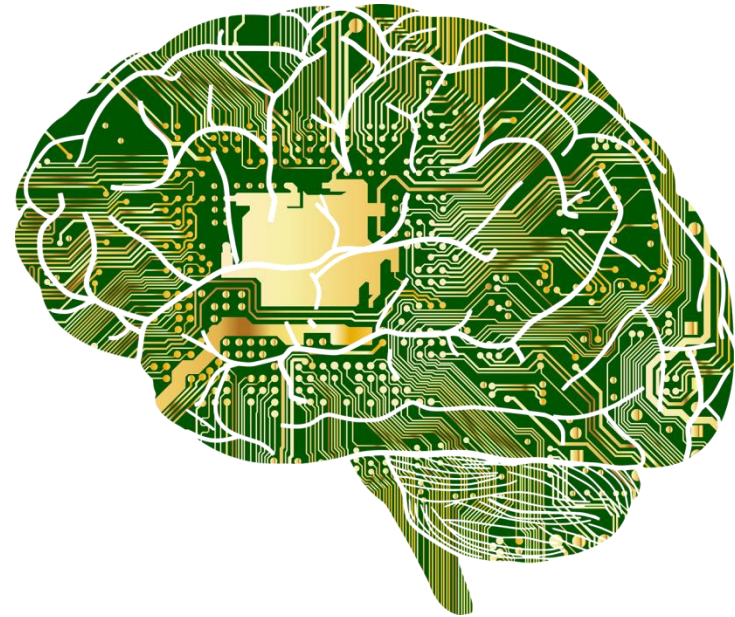
# Today's Topics

- Brain changes that can affect safety at home
- Suggestions for modifications to the physical environment
- Considerations for improving safety during activities at home

# Brain Change Considerations

## Sensory Processing

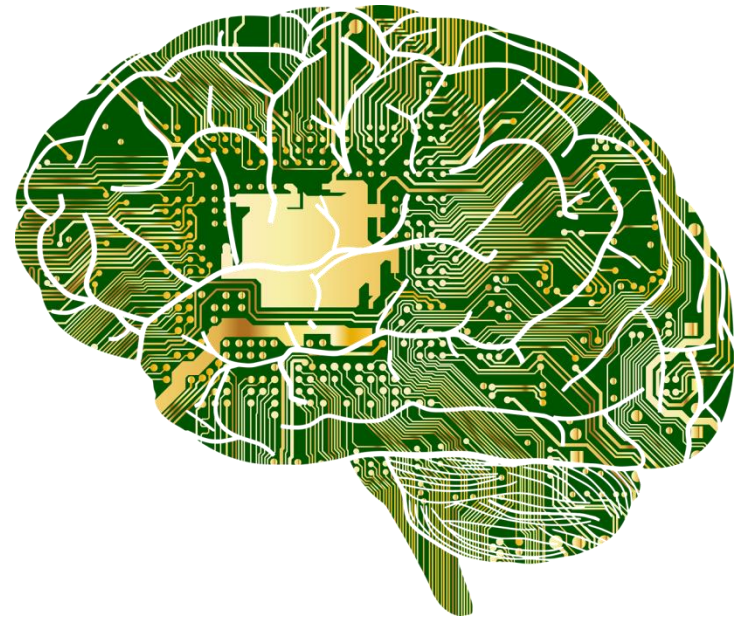
- Safety Alerts
- Trip & Slip Hazards
- Object  
Recognition



# Brain Change Considerations

## Executive Functioning

- Problem-Solving
- Impulse Control
- Attention
- Planning
- Insight





Let's look at some home  
spaces....

# Bathroom

## Physical Environment Suggestions

- Lighting
- Water hazards
- Temperature
- Grab bars
- Low/No Step Entry
- Seating options

# Bathroom

## Activity Considerations

- Extra space for assistants
- Spot to set out supplies
- Water temperature control



# Kitchen

## Physical Environment Suggestions

- Lighting
- Decrease visual clutter
- Drawer pulls
- Microwave placement
- Oven controls

# Kitchen

## Activity Considerations

- Emergency Stove Shut-Off
- Preferred, easy open snacks in visible place
- Check for food spoilage
- Awareness of sharps
- Provide easy instructions near common appliances

# Entry/Exit

## Physical Environment Suggestions

- Lighting
- Handrails
- Ramps
- No clutter on steps
- Visible address numbers

# Entry/Exit

## Activity Considerations

- Resting place by the doorway
- Levers vs knobs
- Wandering supports

# Bedroom

## Physical Environment Suggestions

- Lighting
- Bed set-up
- Avoid clutter
- Seating option

# Bedroom

## Activity Considerations

- Consider night toileting options
- Seating option



In Case of Emergency

# Plan ahead

- If you need help, who can you call?
- Can the person exit the home?
- Can the person call for help?



# Questions & Discussion



Marie Dagger, MS, OTR/L, CDCP, ECHM

[Mdagger@orangecountync.gov](mailto:Mdagger@orangecountync.gov)

919.245.4279

Orange County Aging Helpline:

[AgingTransitions@orangecountync.gov](mailto:AgingTransitions@orangecountync.gov)

919.968.2087

# **DUKE DEMENTIA FAMILY SUPPORT PROGRAM**

## **Caregiver Connections**

**An Educational Webinar Series With The Experts**

**Thank you for joining us today!**

**[dukefamilysupport.org](http://dukefamilysupport.org)**

**919-660-7510**