

# Long-Term Care Community Support Group



This group is open to family members and friends who are caring for or supporting someone currently living in a residential care community.

We aim to create a space where individuals, in similar situations, can come together and offer support and tips to one another. This group is not dementia specific, and is open to all regardless of diagnosis.

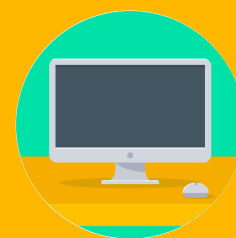
We are currently meeting virtually. Participants are welcome to join by video on Zoom or call in by phone.

To learn more about the group or to be added to the email list, please contact [Natalie Leary](#).



## Details

Meets the 3rd Tuesday of each month at noon.



## 2022 Schedule

Jan. 18	Feb. 15
Mar. 15	Apr. 19
May 17	Jun. 21
Jul. 19	Aug. 16
Sep. 20	Oct. 18
Nov. 15	Dec. 20



## Contact

Natalie Leary  
919-660-7542  
[natalie.leary@duke.edu](mailto:natalie.leary@duke.edu)