

Introduction to PACE

Senior CommUnity
Care of North Carolina 



Dr. Kristin Hlebowitsh, Medical Director

Destiny Alston, Community Outreach Manager



What is our Mission?

The Senior CommUnity Care PACE mission is to enhance the quality of life and independence for 55+ adults by providing a range of services, which help them stay in their community and in their own residence

In order to keep participants living in the community PACE strives to-



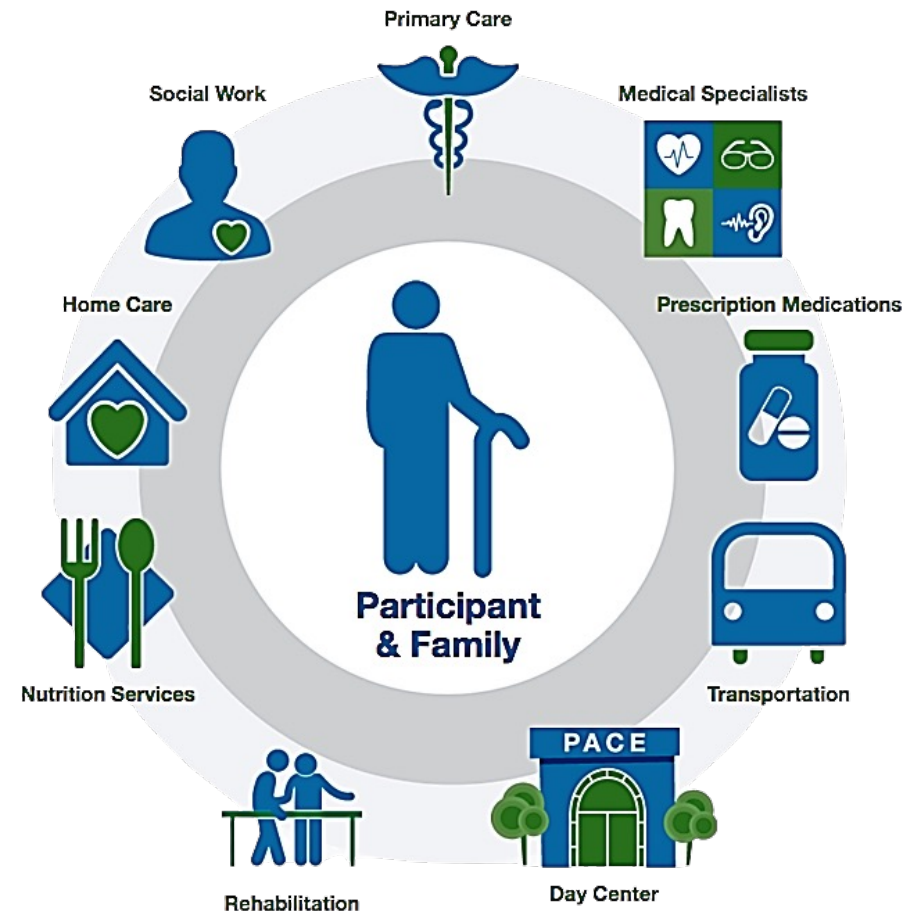
Stay on Top of Chronic Conditions:

- ✓ Congestive Heart Failure
- ✓ COPD & Asthma
- ✓ Diabetes & Complications
- ✓ Dementia & Behavioral Complications
- ✓ Falls & Home Safety
- ✓ Seizure Disorders

Aggressively manage Acute Conditions

Comprehensive Care Model

- Holistic Care Model addressing medical, social, emotional, and functional needs
- Interdisciplinary Care Team (IDT) ensures coordination and personalization
- Focus on Aging in Place: Keeping seniors in their homes and communities



PACE SERVICES: Team-Based Care

An interdisciplinary team of professionals works with older adults and caregivers. We focus on coordinating care, prevention, and independence.

- Physician
- Clinic Nurse
- Home Care Nurse
- Social Worker
- Registered Dietitian
- Physical Therapist
- Occupational Therapist
- Recreation Therapist
- Speech Therapist
- Pharmacist
- Transportation Coordinator
- Certified Nurse Aids
- Center Manager

ELIGIBILITY



To receive PACE services, an individual must:

- Be 55 years of age or older
- Meet the state's nursing home level of care criteria
- Reside in the PACE organization's service area
- Be able to live in a community setting when enrolled without jeopardizing health or safety

To participate in PACE, an individual must:

- Be enrolled in Medicaid only – under 65
- Be enrolled in Medicare and Medicaid (dually eligible)
- Have the ability to privately pay - \$8,200 per month



Service Area Zip Codes



Wake County:

27502, 27503, 27511, 27513, 27518, 27519,
27523, 27526, 27529, 27539, 27540, 27545,
27560, 27562, 27571, 27587, 27591, 27592,
27597, 27601, 27603, 27604, 27605, 27606,
27607, 27608, 27609, 27610, 27612, 27613,
27614, 27615, 27616, 27617

Durham County:

27701, 27703, 27704, 27705,
27706, 27707, 27712, 27713

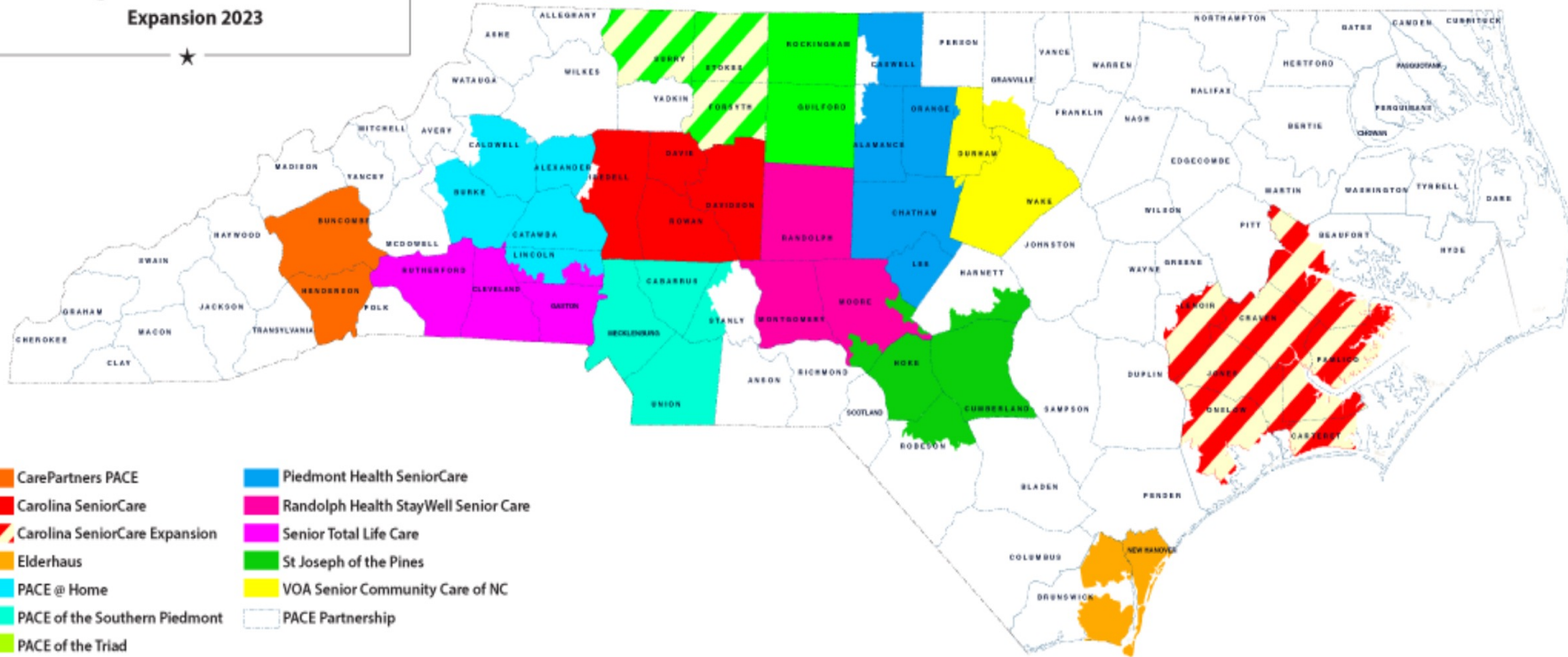
Granville:

27509, 27522

Source: NC Medicaid: <https://files.nc.gov/ncdma/NCPACE-updated-June-2019.pdf>

Program of All-Inclusive Care for the Elderly (PACE) : Across NC

PACE Organizations in NC Service Areas
Expansion 2023



- CarePartners PACE
- Carolina SeniorCare
- Carolina SeniorCare Expansion
- Elderhaus
- PACE @ Home
- PACE of the Southern Piedmont
- PACE of the Triad
- PACE of the Triad Expansion
- Piedmont Health SeniorCare
- Randolph Health StayWell Senior Care
- Senior Total Life Care
- St Joseph of the Pines
- VOA Senior Community Care of NC
- PACE Partnership

Those areas striped indicate future PACE expansion. They are not operational at this time.

PACE SERVICES: Transportation



We provide transportation from home to medical appointments and to our Day Center.

- Door to door service
- PACE drivers are specially trained
- Drivers get to know participants

PACE SERVICES: Medical Care

PACE Clinic

- The PACE doctor and nurses operate the clinic at our day center
- Medical attention is given quickly as issues may arise
- Care Team works with individual to manage all healthcare



PACE SERVICES: Therapy

Physical Therapy:

Help participants maintain an appropriate level of strength and mobility.

- Assessments
- Individual therapy
- Group exercise classes
- Strength and balance

Occupational Therapy:

Provide therapeutic support and adaptive equipment for those who are experiencing physical and cognitive changes.

- Individual evaluation
- Fall prevention education
- Customized intervention
- Adaptive medical equipment

On-Site
&
In Home



PACE SERVICES: Therapy & Socialization

Recreational Therapy:

Therapeutic programs that include recreational and social activities for all levels of cognitive and physical functioning.

- Gardening
- Animal therapy
- Community outreach projects
- Mental stimulation
- Hot meals, nutritional supplements



PACE SERVICES: Home and Personal Care



- Home Care Assessment
- Team will collaborate on needed services
- Independence and safety are key

PACE SERVICES: Other Support

PACE provides other services based on assessment



- Specialty care
- Therapies
- Hospital care
- Cancer & Dialysis Treatment
- Emergency care
- Prescription medications
- Podiatrist
- Vision
- Dental
- Audiology
- Laboratory/X-ray

Enrollment Process!





PACE Participant Profile

Average Age: 76

Average # of ADL Deficits: 3

49% Have Cognitive Impairment

5.8 chronic conditions

95% of PACE participants are able to remain in home settings

Average Life Expectancy: 3-4 years (vs 1-2 years in NH)

PACE SERVICES: Positive Outcomes

Evidenced based program with over 30 years of data shows:

- Less deterioration in physical functioning
- Better health status and quality of life
- Lower rates of ER and hospitalizations

NREPP SAMHSA's National Registry of Evidence-based Programs and Practices

Senior CommUnity
Care of North Carolina



THANK YOU!
Please come visit us!

www.seniorcommunitycarenc.org

Referral: (919) 425-3050